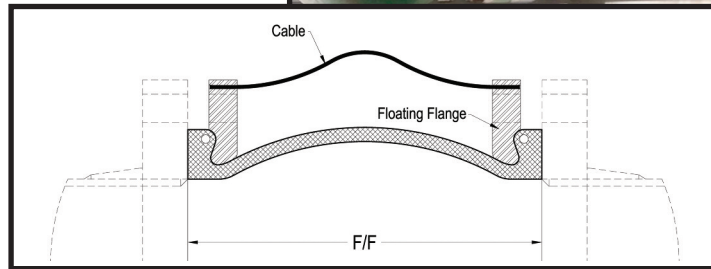
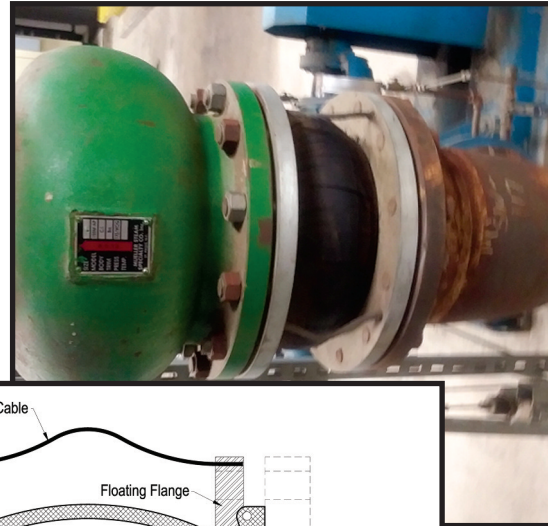
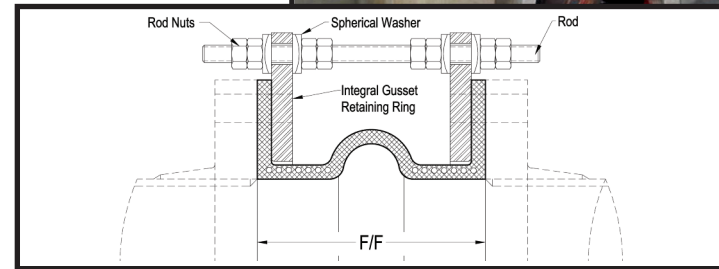
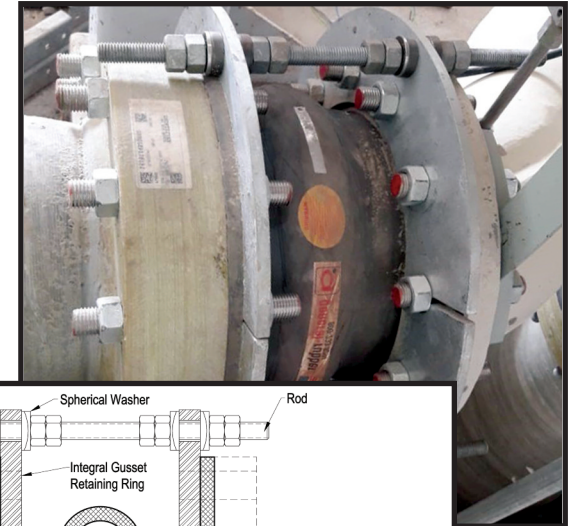


## Rubber Expansion Joints • Spherical vs. Spool Type

**Spherical Type**



**Spool Type**



<b>Quality Standard</b>	<b>Unknown</b>	Questionable quality control with a commodity approach and often unknown composition and manufacturers affiliation.	<b>Made in the USA</b>	100% quality controlled, high performance product manufactured by ISO 9001 & 14001 certified and FSA member company.
<b>Control Units</b>	<b>Cables</b>	Cables are unable to initially restrain the pressure thrust force until the slack is consumed, exerting the full pressure thrust force on adjacent piping and equipment. Not a universally accepted code restraint.	<b>Tie Rods</b>	Tie Rods protect adjacent piping and equipment by continuously restraining the full pressure thrust force. Certified to ASME B31.3 and other internationally accepted pipe code standards.
<b>Pressures</b>	<b>Standard</b>	Commodity design without embed-ded high tensile steel reinforcement material. Commodity design cannot be modified for higher pressures or full vacuum.	<b>Higher</b>	Performance design with embedded high tensile steel reinforcement material for high pressure and full vacuum. Custom and higher pressures easily accommodated.
<b>Sealing Area</b>	<b>Reduced</b>	Embedded cable in the stub flange is often out of round with reduced sealing area and increased likelihood of flange pullout failure.	<b>Greater</b>	Integral full-face rubber flange provides greater sealing area with all reinforcing fabric extending to flange OD for maximum safety.
<b>Customization</b>	<b>No</b>	Custom lengths and built-in offsets are unavailable. Unable to meet lower spring rates or higher movement requirements. Limited selection for elastomer tube & cover combinations.	<b>Yes</b>	Available with custom lengths and built-in angular &/or lateral offsets. Designed to meet critical spring rates &/or greater movement requirements. Various tube & cover combinations available.
<b>Service Life</b>	<b>Shorter</b>	Non-Performance design with shortened service life.	<b>Longer</b>	Performance design providing 20 plus years of maintenance free service life.